

Teach Lab

# Tech-cards

Co-developed with Hong Kong True Light College

SOINNO  
DESIGN  
EDUCATION  
啟迪創新習作

Organiser



Funded by



The Hong Kong Jockey Club Charities Trust

 [polyjcsoinno.hk/design-education](http://polyjcsoinno.hk/design-education)

 [SoinnoDeEd](#)

 [soinno\\_design\\_education](#)



Tech Cards © 2023 by Jockey Club Design Institute for Social Innovation is licensed under CC BY-NC 4.0. To view a copy of this license, visit <http://creativecommons.org/licenses/by-nc/4.0/>

輸出 Output



文字  
Text

輸出 Output



聲音  
Sound

輸出 Output



動畫  
Animation

輸出 Output



水泵  
Water Pump

輸出 Output



光  
Light

輸出 Output



動作  
Movement

輸出 Output



音樂  
Music

輸出 Output



動能  
Kinetic Energy

## OUTPUT CARD

Print on A4 paper  
Printer setting: print with actual size

## 輸出卡

把檔案打印到 A4 紙上  
列印設定: 列印比例「實際大小」

輸出 Output



屏幕  
Screen

輸出 Output



電話  
Phone

輸出 Output



震動  
Vibration

輸出 Output



空氣  
Air

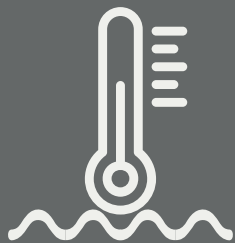
**OUTPUT CARD**

Print on A4 paper  
Printer setting: print with actual size

**輸出卡**

把檔案打印到 A4 紙上  
列印設定: 列印比例「實際大小」

輸入 Input



水溫  
Water Temperature

輸入 Input



溫度  
Temperature

輸入 Input



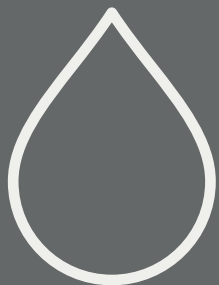
聲音強度  
Sound volume

輸入 Input



光度  
Light Level

輸入 Input



水滴  
Rain Drop

輸入 Input



壓力  
Pressure

輸入 Input



按鈕  
Button

輸入 Input



距離  
Distance

## INPUT CARD

Print on A4 paper  
Printer setting: print with actual size

## 輸出卡

把檔案打印到 A4 紙上  
列印設定: 列印比例「實際大小」

輸入 Input



開關  
Switch

輸入 Input



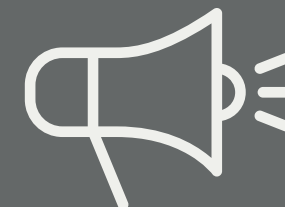
手勢  
Gesture

輸入 Input



空氣  
Air

輸入 Input



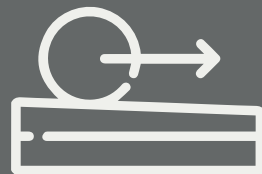
聲音  
Sound

輸入 Input



水滴  
Rain drop

輸入 Input



運動  
Motion

輸入 Input



心跳  
Heart Beat

輸入 Input



手機  
Phone

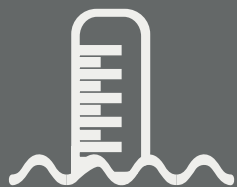
### INPUT CARD

Print on A4 paper  
Printer setting: print with actual size

### 輸出卡

把檔案打印到 A4 紙上  
列印設定: 列印比例「實際大小」

輸入 Input



水位  
Water Level

輸入 Input



無線電波  
Radio

輸入 Input



搖動  
Shake

輸入 Input



顏色  
Colors

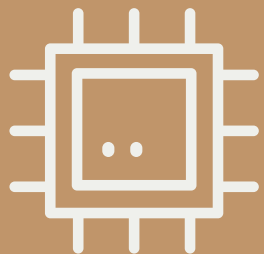
#### INPUT CARD

Print on A4 paper  
Printer setting: print with actual size

#### 輸出卡

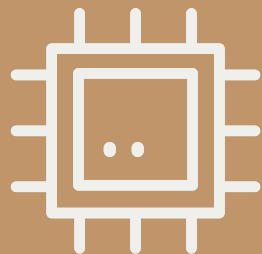
把檔案打印到 A4 紙上  
列印設定: 列印比例「實際大小」

處理 Process



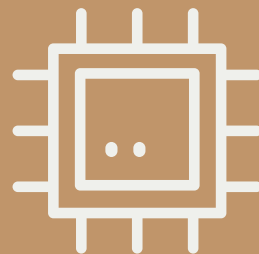
電腦  
Computer

處理 Process



電腦  
Computer

處理 Process



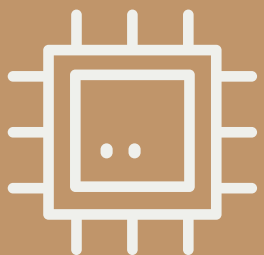
電腦  
Computer

連結 Connect



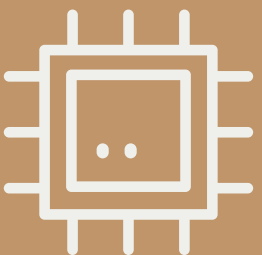
無線網路  
Wi-Fi

處理 Process



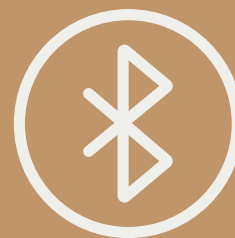
電腦  
Computer

處理 Process



電腦  
Computer

連結 Connect



藍牙  
Bluetooth

連結 Connect



紅外線  
Infrared Ray

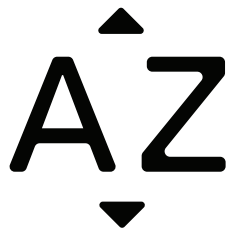
**PROCESS/ CONNECT CARD**

Print on A4 paper  
Printer setting: print with actual size

**處理/ 連結卡**

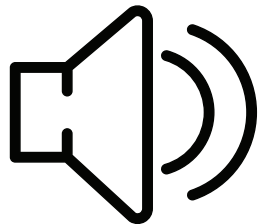
把檔案打印到 A4 紙上  
列印設定: 列印比例「實際大小」

輸出Output



文字  
Text

輸出Output



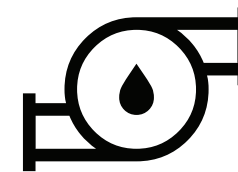
聲音  
Sound

輸出Output



動畫  
Animation

輸出Output



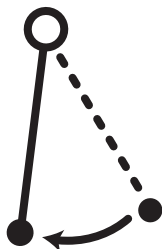
水泵  
Water Pump

輸出Output



光  
Light

輸出Output



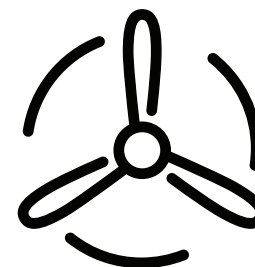
動作  
Movement

輸出Output



音樂  
Music

輸出Output



動能  
Kinetic Energy

**OUTPUT CARD**

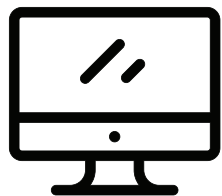
Print on A4 blue paper  
Printer setting: print with actual size

**輸出卡**

把檔案打印到藍色 A4 紙上  
列印設定: 列印比例「實際大小」

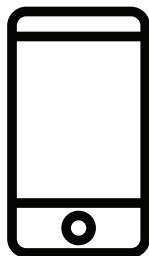


輸出Output



屏幕  
Screen

輸出Output



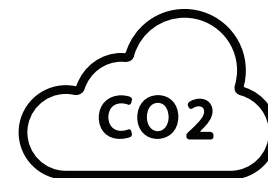
電話  
Phone

輸出Output



震動  
Vibration

輸出Output



空氣  
Air

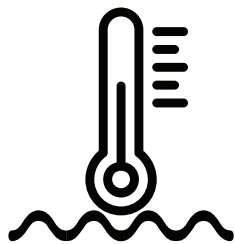
#### OUTPUT CARD

Print on A4 blue paper  
Printer setting: print with actual size

#### 輸出卡

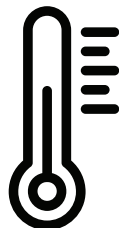
把檔案打印到藍色 A4 紙上  
列印設定: 列印比例「實際大小」

輸入 Input



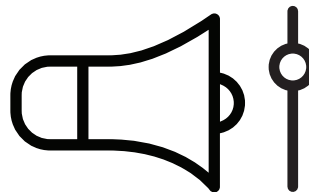
**水溫**  
Water Temperature

輸入 Input



**溫度**  
Temperature

輸入 Input



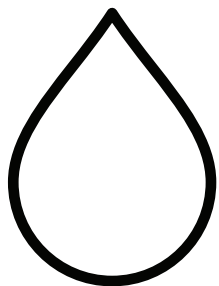
**聲音強度**  
Sound Volume

輸入 Input



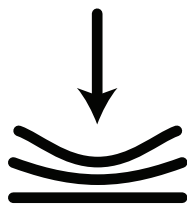
**光度**  
Light Level

輸入 Input



**水滴**  
Rain Drop

輸入 Input



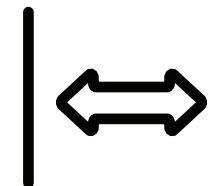
**壓力**  
Pressure

輸入 Input



**按鈕**  
Button

輸入 Input



**距離**  
Distance

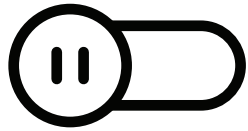
#### INPUT CARD

Print on A4 orange paper  
Printer setting: print with actual size

#### 輸入卡

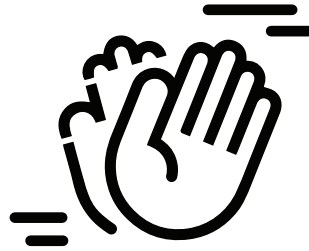
把檔案打印到橙色 A4 紙上  
列印設定: 列印比例「實際大小」

輸入 Input



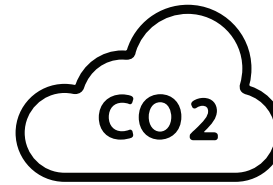
開關  
Switch

輸入 Input



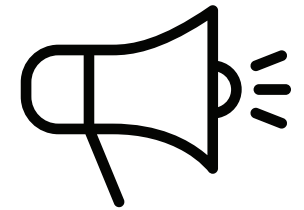
手勢  
Gesture

輸入 Input



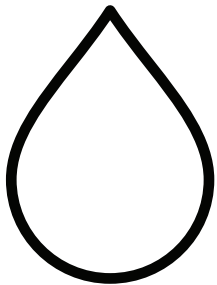
空氣  
Air

輸入 Input



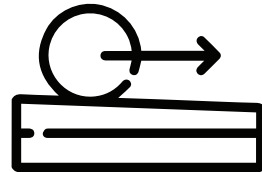
聲音  
Sound

輸入 Input



濕度  
Rain drop

輸入 Input



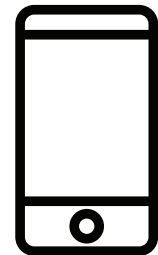
運動  
Motion

輸入 Input



心跳  
Heart Beat

輸入 Input



手機  
Phone

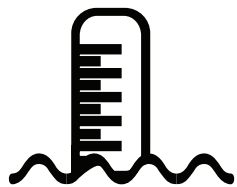
**INPUT CARD**

Print on A4 orange paper  
Printer setting: print with actual size

**輸入卡**

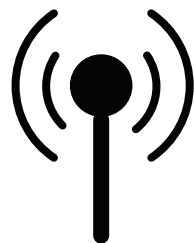
把檔案打印到橙色 A4 紙上  
列印設定: 列印比例「實際大小」

輸入 Input



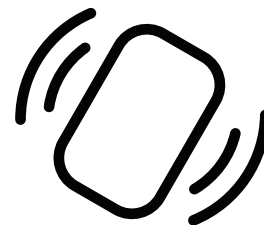
**水位**  
Water Level

輸入 Input



**無線電波**  
Radio

輸入 Input



**搖動**  
Shake

輸入 Input



**顏色**  
Colors

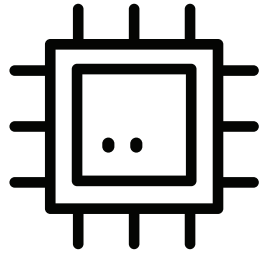
#### INPUT CARD

Print on A4 orange paper  
Printer setting: print with actual size

#### 輸出卡

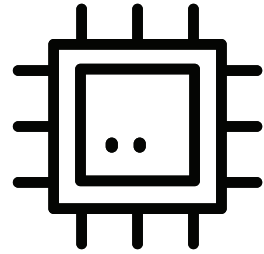
把檔案打印到橙色 A4 紙上  
列印設定: 列印比例「實際大小」

處理 Process



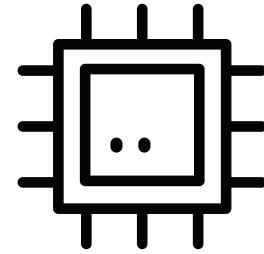
電腦  
Computer

處理 Process



電腦  
Computer

處理 Process



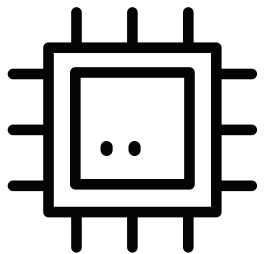
電腦  
Computer

連結 Connect



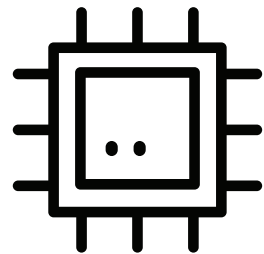
無線網路  
Wi-Fi

處理 Process



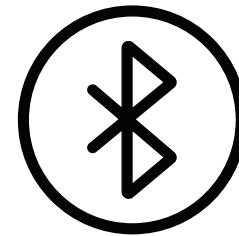
電腦  
Computer

處理 Process



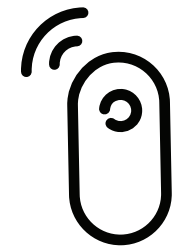
電腦  
Computer

連結 Connect



藍牙  
Bluetooth

連結 Connect



紅外線  
Infrared Ray

PROCESS/ CONNECT CARD

Print on A4 grey paper  
Printer setting: print with actual size

處理/ 連結卡

把檔案打印到灰色 A4 紙上  
列印設定: 列印比例「實際大小」